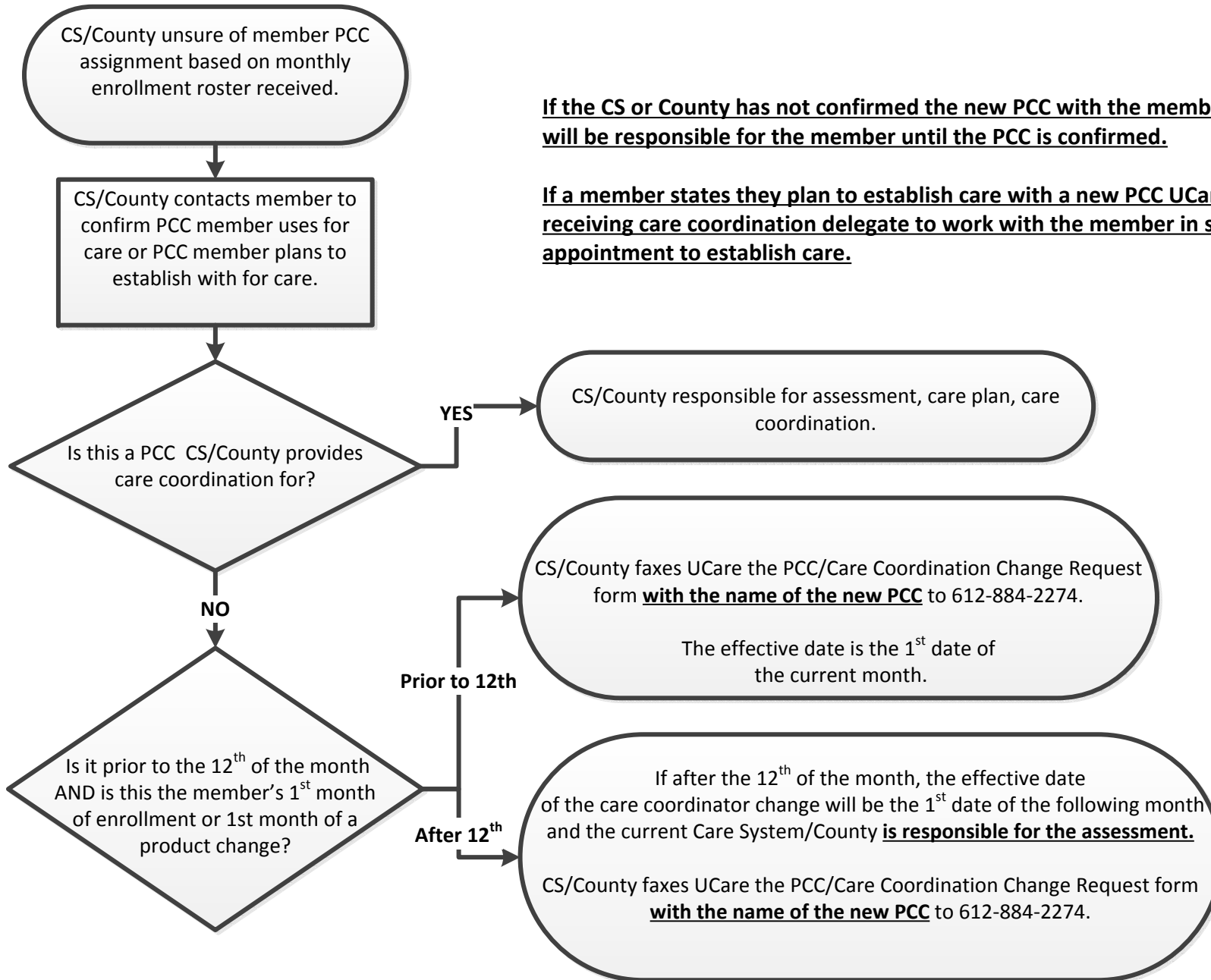


# Care System (CS) or County PCC/Care Coordination Change Process



**If the CS or County has not confirmed the new PCC with the member, the CS or County will be responsible for the member until the PCC is confirmed.**

**If a member states they plan to establish care with a new PCC UCare expects the receiving care coordination delegate to work with the member in scheduling the appointment to establish care.**